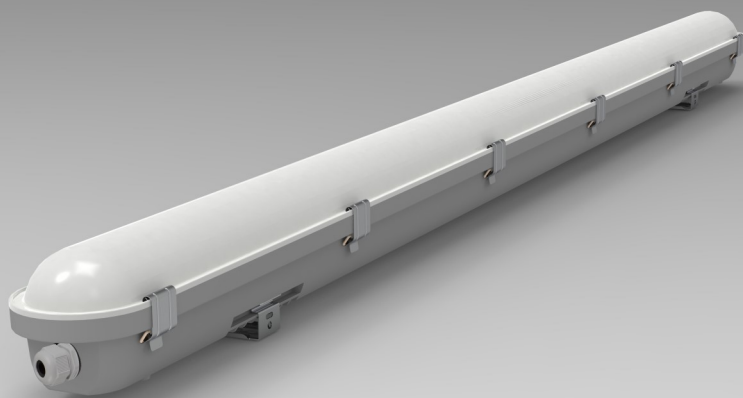


# TPS

- . 20 / 40 / 60 Watt
- . RA80+
- . 120 lm/W
- . 3000/4000 K
- . 120° beam angle



## POWER

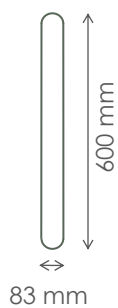
20 W

40 W

60 W

## DIMENSIONS

600 X 83 X 72 mm



1200 X 83 X 72 mm



1500 X 83 X 72 mm

