

TUPENDO

EE-TP15



15W



2700K/
3000K



1499 lm



25°/40°



dimmable
TRIAC

TECHNICAL FEATURES

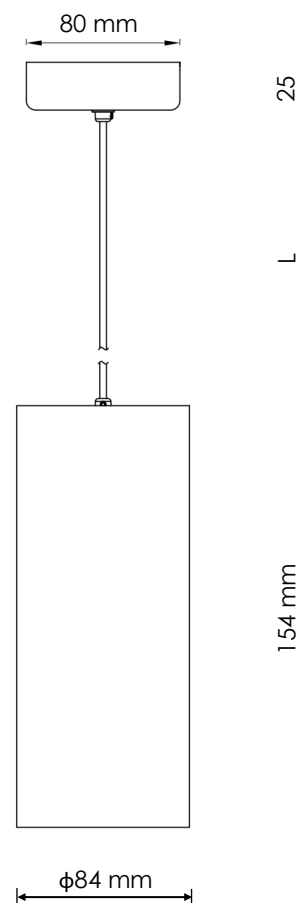
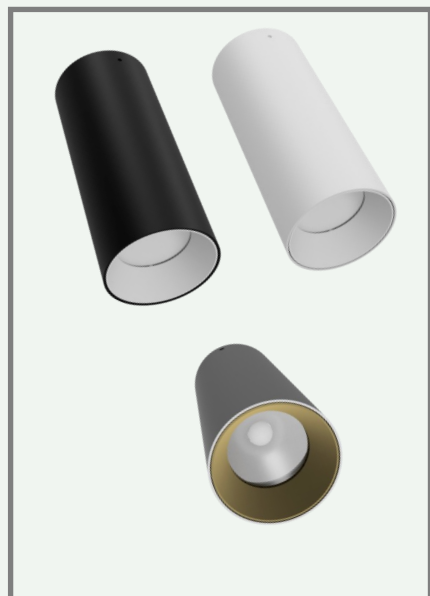
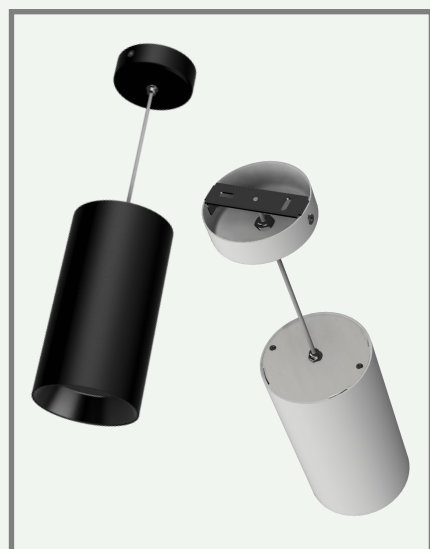
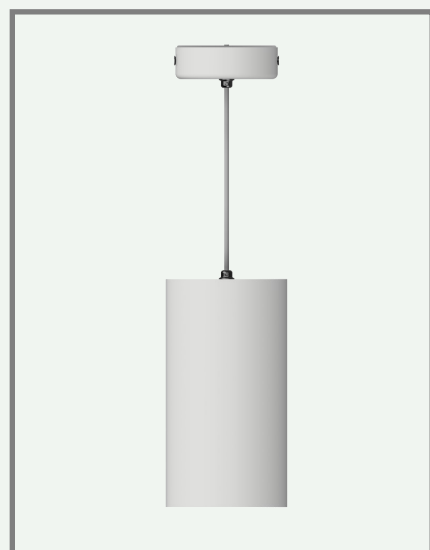
Power	15W
Input current	220-240 Vac
Dimmable	Triac, optional dali
IP rating	20
Max. amb. Temp.	45°C

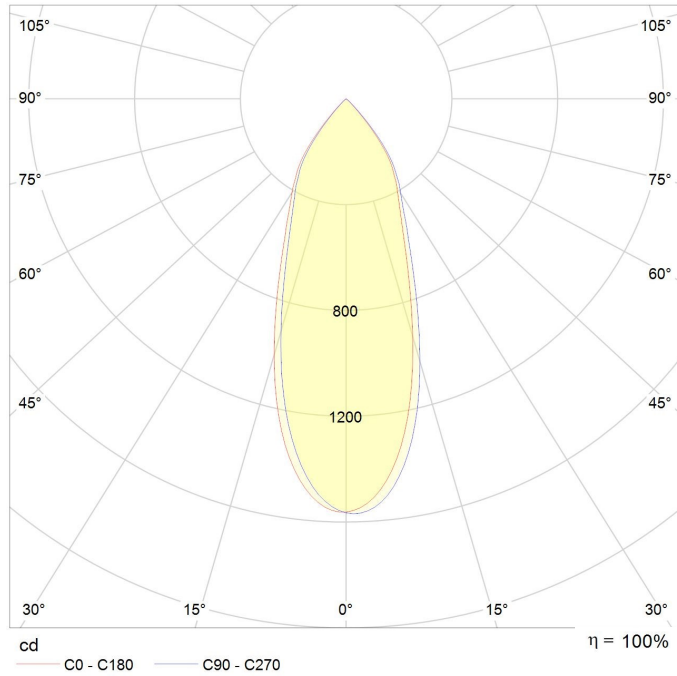
LIGHTING CHARACTERISTICS

Light color	2700/3000 K
Beam angle	25°/40°
CRI	RA90+
Lumen output	1499 lm
LEDtype	CREE CXA 1507

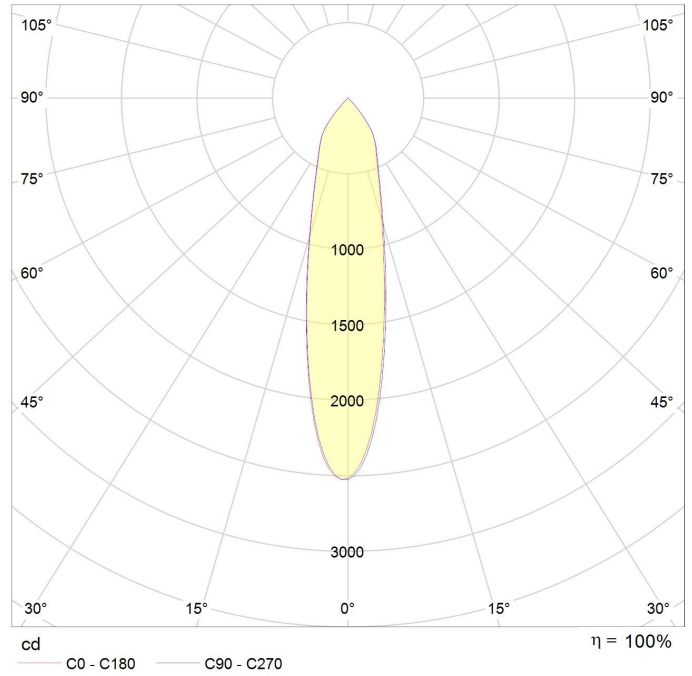
MEASUREMENTS AND MATERIAL FEATURES

Measurements	154 x 84 mm
Material	aluminium
Color housing	black/white
Color innerring	black/white/gold





TUPENDO 15 - beam angle 40°



TUPENDO 15- beam angle 25°

PRODUCTTYPE	POWER	LIGHT COLOR	BEAM ANGLE	COLOR HOUSING	COLOR INNERRING
EE- TP	15	/ 27	- 25	B	G
TUPENDO	WATT	KELVIN	°	BLACK/WHITE	BLACK/WHITE /GOLD

SUMMARY PRODUCTCODES TUBELLO 8:

EE-TP15/27-25BB	EE-TP15/30-25BB
EE-TP15/27-25BW	EE-TP15/30-25BW
EE-TP15/27-25BG	EE-TP15/30-25BG
EE-TP15/27-25WB	EE-TP15/30-25WB
EE-TP15/27-25WW	EE-TP15/30-25WW
EE-TP15/27-25WG	EE-TP15/30-25WG
EE-TP15/27-40BB	EE-TP15/30-40BB
EE-TP15/27-40BW	EE-TP15/30-40BW
EE-TP15/27-40BG	EE-TP15/30-40BG
EE-TP15/27-40WB	EE-TP15/30-40WB
EE-TP15/27-40WW	EE-TP15/30-40WW
EE-TP 15/27-40WG	EE-TP15/30-40WG

