

ODL32

EE-ODL32



32W



2700K/3000K



3280 lm



100°



Triac

**TECHNICAL FEATURES**

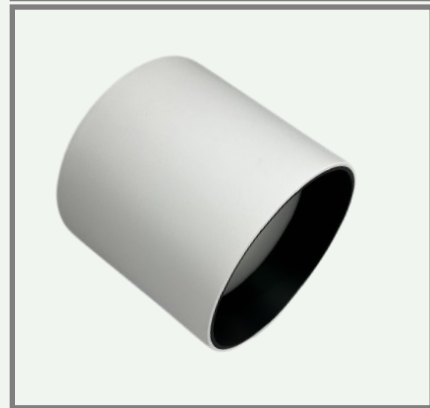
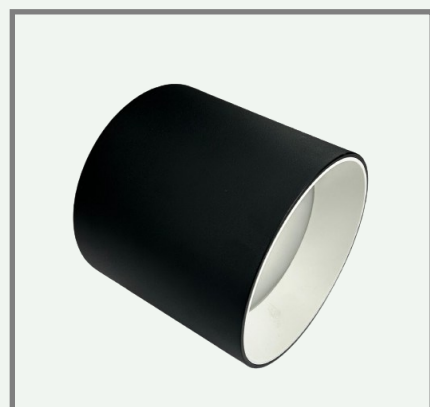
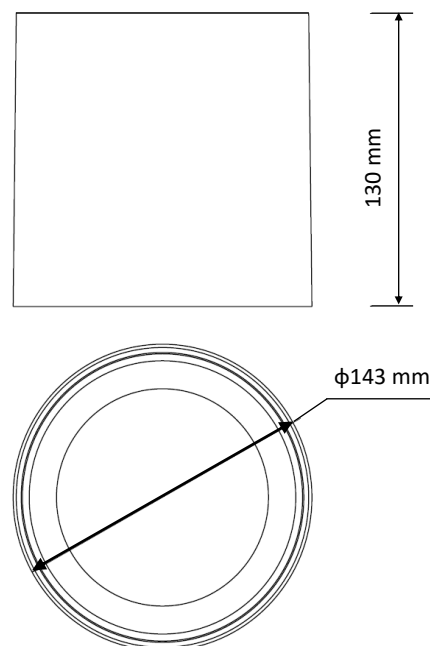
|                          |  |
|--------------------------|--|
| <b>Power</b>             | 32W  |
| <b>Input voltage</b>     | 220-240 Vac                                    |
| <b>Driver</b>            | Built-in, Flicker-free<br>Sec: 27-40 Vdc 800mA |
| <b>Dimmable</b>          | Triac  |
| <b>Optional Dimmable</b> | Dali   |
| <b>IP rating</b>         | 20   |
| <b>Max. amb. Temp.</b>   | 45°C   |

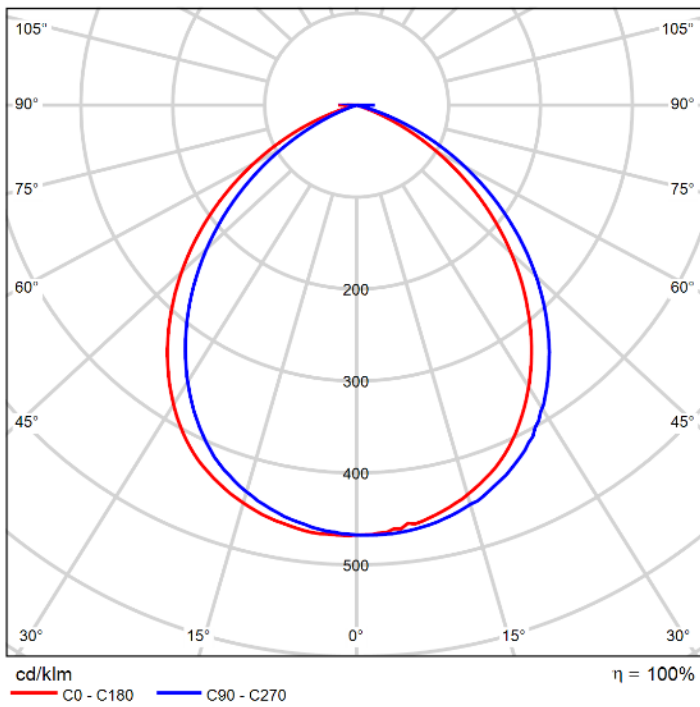
**LIGHTING CHARACTERISTICS**

|                     |                                |
|---------------------|--------------------------------|
| <b>Light color</b>  | 2700K/3000K<br>Optional: 4000K |
| <b>Beam angle</b>   | 100°                           |
| <b>CRI</b>          | RA90+                          |
| <b>Lumen output</b> | 3280 lm                        |
| <b>LED type</b>     | SMD 2835                       |
| <b>Life time</b>    | 50000h                         |
| <b>Flux code</b>    | 60 92 100 100 100              |

**MEASUREMENTS AND MATERIAL FEATURES**

|                          |   |
|--------------------------|---|
| <b>Measurements</b>      | φ143x130 mm   |
| <b>Material</b>          | Aluminium   |
| <b>Body color</b>        | Black, White  |
| <b>Inside ring color</b> | Black, White,<br>Exclusive Metallic Black,<br>Exclusive Chrome,<br>Exclusive Pearly Silver<br>Exclusive Rose Gold |





**ODL32/30**

**Code :**

| PRODUCT TYPE   | POWER          | LIGHT COLOR | BODY COLOR | INSIDE RING COLOR |
|----------------|----------------|-------------|------------|-------------------|
| <b>EE- ODL</b> | <b>32 / 30</b> | <b>- W</b>  | <b>W</b>   |                   |
|                | WATT           | 3000 KELVIN |            |                   |