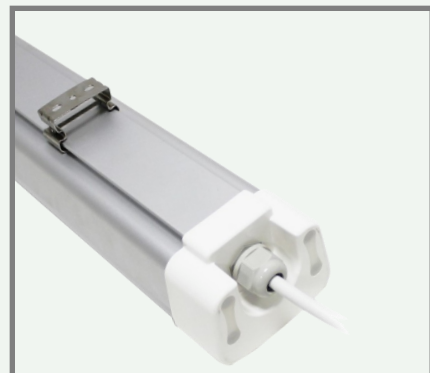


TPH

EE-TPH150-50



50W



3000 /
4000 K



6195 lm



120°



Optional
Dali

TECHNICAL FEATURES

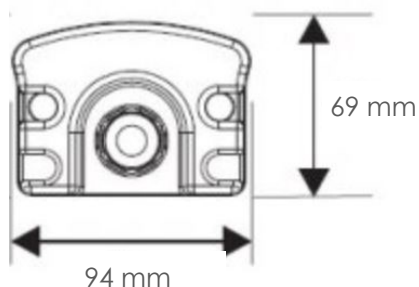
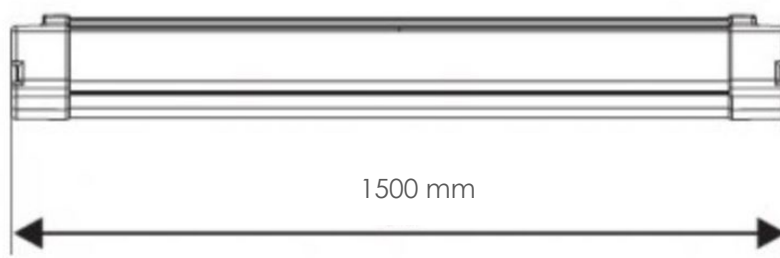
Power	50W
Input current	100-277 Vac
Dimmable	Optional dali
IP rating	IP65/IK09
Max. amb. Temp.	60°C

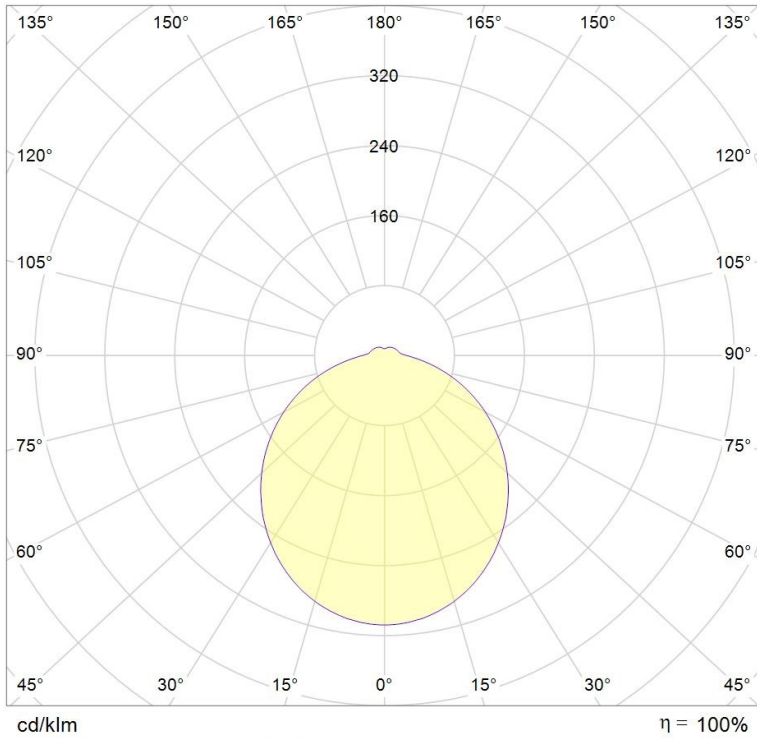
LIGHTING CHARACTERISTICS

Light color	3000/4000 K
CRI	RA80+
Lumen output	6195 lm
LED-type	SMD2835
Amount of LED's	288

MEASUREMENTS AND MATERIAL FEATURES

Measurements	1500 x 94 x 69 mm
Material	aluminium





TPH150-50

PRODUCTTYPE	DIMENSION	POWER	LIGHT COLOR
EE- TPH	150	50	30
TRI PROOF HIGH END	150 cm (length)	50 Watt	3000 K

SUMMARY PRODUCTCODES TPH150-50:

EE-TPH150-50/30
EE-TPH150-50/40